

## The Meadow-Wood

*Designed around the kitchen diner as the heart of the home, the Meadow-Wood is a beautiful, contemporary home. It is suitable for both Residential or Leisure Lodge living. Elegantly appointed rooms and stunning bathrooms.*

### Exterior

- Dark Grey Metrotile Roof
- One Set of French Doors to Lounge
- Long Picture Windows
- Rendered Exterior with feature Cedar Cladding
- UPVC Energy Efficient Double Glazing

### Living Room

- Two-Seater Sofa and Two Accent Chairs
- Entertainment Shelf
- Vaulted Ceilings throughout
- Quality Carpet and Underlay (choice of colours)

### Kitchen / Diner

- Cream Gloss Shaker Style Kitchen Units
- Integrated Eye Level Double Oven and Gas Hob
- Integrated Fridge/ Freezer and Dishwasher
- Wine Cooler
- Central Island Unit/ Breakfast Bar with two co-ordinating Bar Stools
- Oak Laminate Flooring
- Painted Oak Extendable Table and Six Chairs

### Utility

- Cream Gloss Shaker Style Kitchen Units
- Integrated Washer Dryer
- Oak Laminate Flooring
- Stainless Steel sink



## Master Suite

- Double Ottoman Storage Bed with Mattress
- Two Freestanding Bedside Cabinets
- Built In Wardrobes with two Oak Finished Sliding Doors and a Full Length Mirror Sliding Door
- Internal Shelving, Hanging Rail and Drawer Unit
- Curtains included

## Master En-Suite

- Large Walk-In Shower
- LED Mirror Cabinet
- White Gloss Vanity Unit
- Heated Chrome Towel Rail

## Bedroom 2

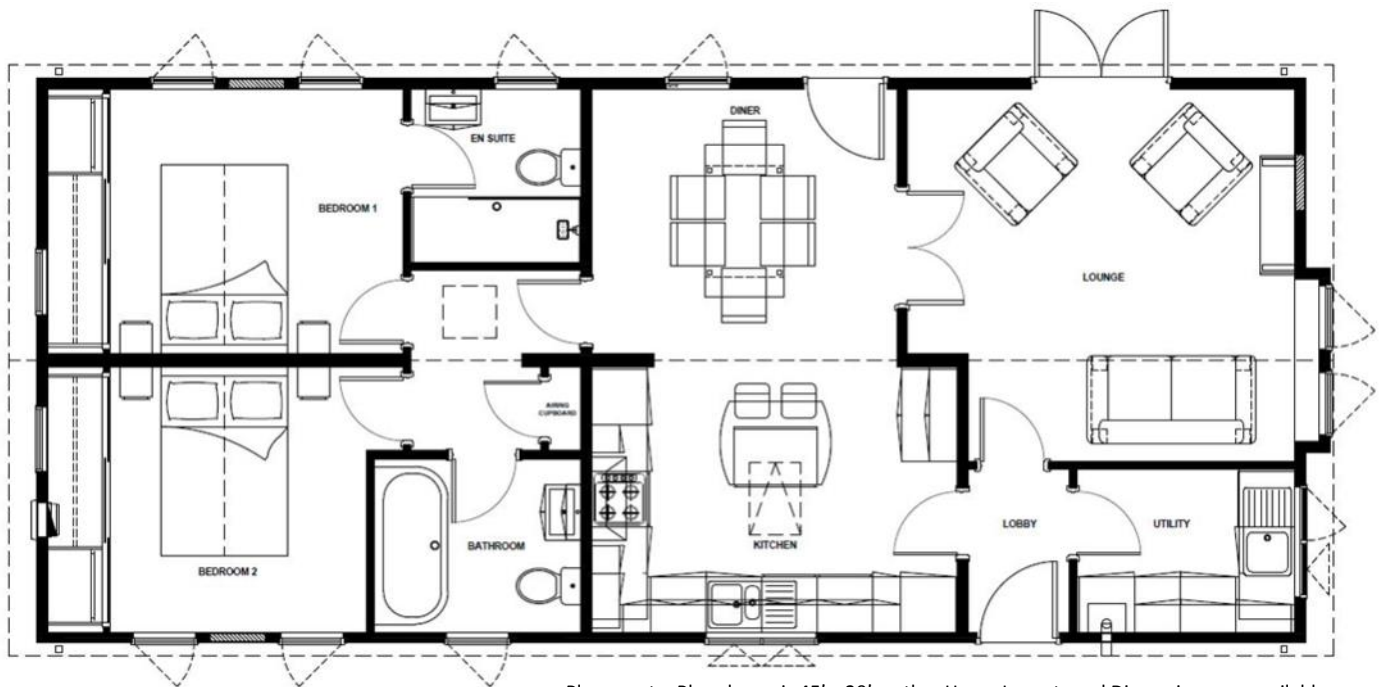
- Double Ottoman Storage Bed with Mattress
- Two Freestanding Bedside Cabinets
- Built In Wardrobes with two Oak Finished Sliding Doors and a Full Length Mirror Sliding Door
- Internal Shelving, Hanging Rail and Drawer Unit
- Curtains included

## Family Bathroom

- Modern Back to Wall Bath complete with concealed handheld Shower Fitting
- Feature Tiled Bath Area
- White Gloss Vanity Unit
- LED Mirror Cabinet
- Heated Chrome Towel Rail



ALL IMAGES ARE FOR ILLUSTRATIVE PURPOSES ONLY



Please note: Plan shown is 45' x 20' – other Home Layouts and Dimensions are available.

Units 1 - 3 Arley Industrial Estate  
Colliers Way  
Arley, Coventry, CV7 8HN

t 01676 542000  
e info@sovplc.co.uk

**sovereign**<sup>®</sup>  
CROWN  
PARK AND LEISURE HOMES